

## EXPLORER 540 LTE Modem

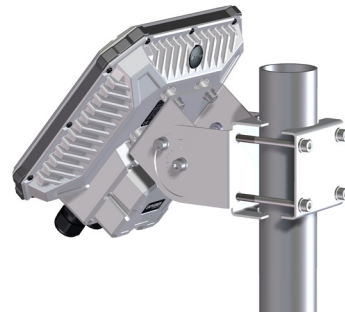
### Installation guide, Integrated modem

#### Unpack the modem

The package contains:

- EXPLORER 540 LTE Modem with 8 Torx screws mounted.
- USB cable, 12 cm
- Torx bit size TX10 (tamper resistant, 1/4" Hex drive)

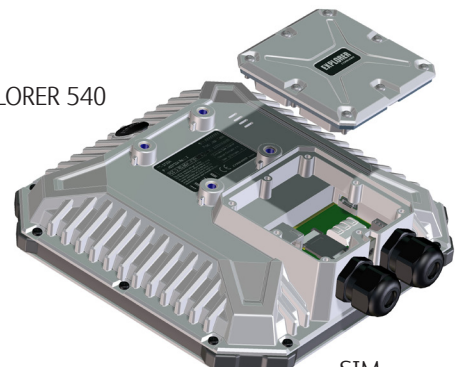
**Note:** When you use the EXPLORER 540 with an LTE Modem, a separate DC supply is recommended instead of PoE in order to supply sufficient power for the LTE Modem as well as the EXPLORER 540.




#### Prepare the EXPLORER 540 terminal

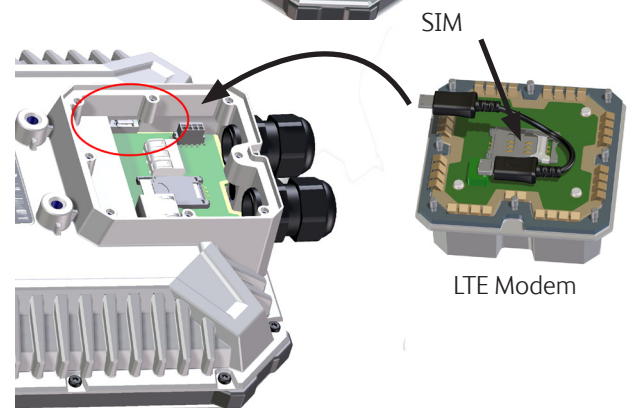
1. Remove the 8 screws holding the small cover at the back of the EXPLORER 540. Use the enclosed Torx bit.
2. Take off the cover.

EXPLORER 540



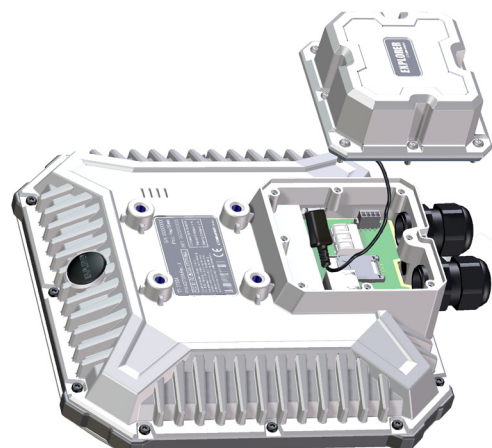
#### Install the modem

1. On the LTE modem, insert the cellular SIM card into the SIM holder and slide the lock to hold the SIM.
2. On the EXPLORER 540, lead the LAN and DC cables through the cable glands and connect them inside the cable compartment of the EXPLORER 540. Tighten the cable glands.
3. Connect the short USB cable between the LTE modem and the Micro B connector X6 in the EXPLORER 540.
4. Carefully place the modem on top of the EXPLORER 540 as shown. Make sure the modem is oriented correctly to match the cable compartment of the EXPLORER 540.
5. Tighten the 8 screws with the Torx bit.
6. Connect a computer to the LAN cable, open your browser and access the EXPLORER 540 web interface (default: <http://192.168.0.1>).
7. When the web interface opens, select  and:
  - a. Under **Advanced > EXPLORER Cellular modem**, disable the PIN.
  - b. Under **Advanced > EXPLORER Cellular modem > Advanced modem settings**, select **Internal** and set up your cellular connection.
  - c. Under **Terminal Settings**, set the **Connection mode** (BGAN/Cellular).
  - d. Under **Advanced**, set up the **Connection watchdog**.
8. Install the EXPLORER 540 according to the EXPLORER 540 Installation guide.



SIM

LTE Modem



For details, see the User and integrator's manual for the EXPLORER 540.

## EXPLORER 540 LTE Modem

### Installation guide, Standalone modem

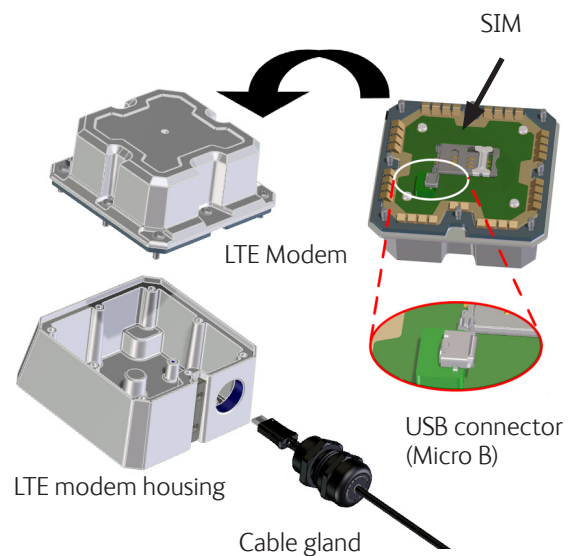
#### Unpack the modem and extension kit

Modem contents
EXPLORER 540 LTE Modem including Torx screws
USB cable, 12 cm
Torx bit size TX10


Extension kit contents
USB cable, 200 cm
LTE modem housing
Cable gland
Torx bit size TX10

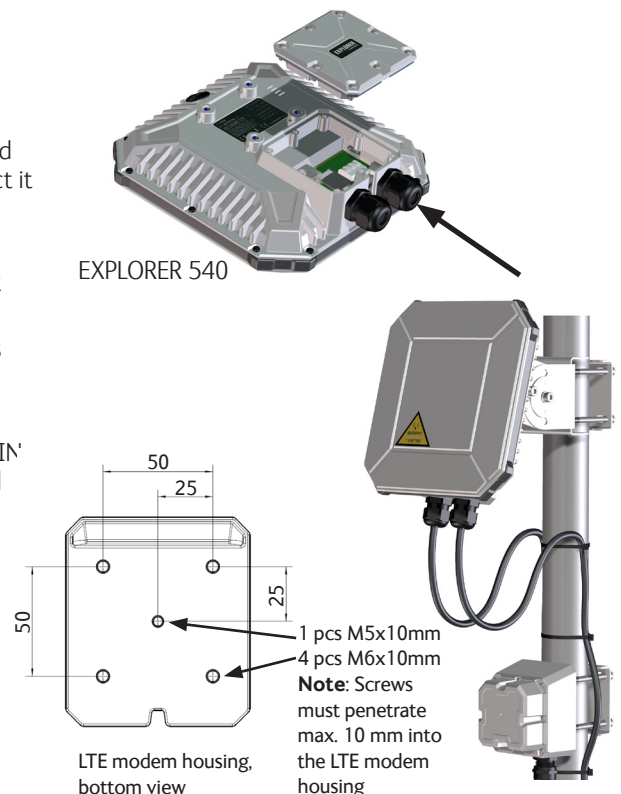
#### Assemble the Standalone modem

1. Insert the cellular SIM card into the SIM holder on the LTE modem and slide the lock to hold the SIM.
2. Lead the long USB cable through the cable gland and through the threaded hole in the side of the LTE modem housing.
3. Connect the cable end that is inside the housing to the USB connector on the LTE Modem.
4. Use the cable relief to attach the cable inside the housing. Make sure the cable is arranged so that it is not damaged when the modem is mounted on the housing.
5. Mount the cable gland in the housing and tighten it.
6. Attach the LTE Modem to the housing and tighten the 8 screws using the Torx bit.



#### Connect to the EXPLORER 540

1. On the EXPLORER 540, use the enclosed Torx bit (TX10) to remove the 8 screws holding the small cover at the back.
2. Take off the cover.
3. Lead your LAN and DC cables through the cable glands and connect them inside the cable compartment of the EXPLORER 540.
4. Lead the long USB cable from the LTE modem through the cable gland closest to the Micro B connector X6 in the EXPLORER 540 and connect it (see reverse side for location of the connector).
5. Tighten the cable glands.
6. Remount the small cover for the cable compartment in the EXPLORER 540 and tighten the screws with the Torx bit.
7. Connect a computer to the LAN cable, open your browser and access the EXPLORER 540 web interface (default: <http://192.168.0.1>).
8. When the web interface opens, select  and:
  - a. Under **Advanced > EXPLORER Cellular modem**, disable the PIN
  - b. Under **Advanced > EXPLORER Cellular modem > Advanced modem settings**, select **External** and set up your cellular connection.
  - c. Under **Terminal Settings**, set the **Connection mode**.
  - d. Under **Advanced**, set up the **Connection watchdog**.
9. Install the LTE modem. See position and size of mounting holes in the drawing to the right. The EXPLORER 540 pole mount kit can also be used for the LTE modem and is available as an optional accessory (P/N 403650A-923).
10. Install the EXPLORER 540 according to the EXPLORER 540 Installation guide.



For details, see the User and integrator's manual for the EXPLORER 540.